

# Highly<sup>®</sup> DH&BH Rotary Compressor Unit



Nomenclature:

## LDH1.5Z

L: **Temperature** M: -15°C ~ -10°C / L: -30°C ~ -15°C

D: **Canstant Freueng Compressor** B: Invert compressor

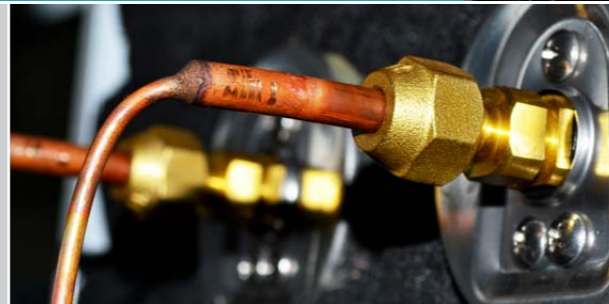
H: **Highly Rotary Compressor**

1.5: **HP**

Z: **Refrigerant** Z: for R404A/R410A/R448A/R449A

Product Description:

- ★ Adopt double - rotor process, vibration noise is very quiet;
- ★ With spray device technology, suitable for the special conditions of high pressure ratio of refrigeration. The evaporation temperature can be -40 ° c, effectively replacing the current high and medium temperature models of scroll compressor;
- ★ Equipped with a large capacity gas-liquid separator, effectively reduce the risk of liquid attack;
- ★ The unit adopts copper tube heat exchanger with internal thread, which has high heat transfer efficiency;
- ★ Dia 5mm inner groove copper tube and corrugated fin.



Supcool Refrigeration Equipment Factory

## Castant Frequency Unit

Model	LDH1.5Z	LDH02Z	LDH03Z	LDH3.5Z	LDH04Z	LDH05Z	LDH65Z
Compressor Model	WHP05180DCV	DDH307LV	WHP09800DCV	DTH488LC3	DTH590LC3	DTE752LC3	WHP19460DCC3
Power Supply	220V/1PH/50HZ	220V/1PH/50HZ	220V/1PH/50HZ	380V/3PH/50HZ	380V/3PH/50HZ	380V/3PH/50HZ	380V/3PH/50HZ
Cold Room Temperature (°C)	-30°C ~ +5°C						
Refrigerant	R404A / R410A / R448A / R449A						
Condenser	Heat Exchange Area	20 m <sup>2</sup>	20 m <sup>2</sup>	30 m <sup>2</sup>	40 m <sup>2</sup>	40 m <sup>2</sup>	60 m <sup>2</sup>
	Fan Qty *Dia (mm)	1 × φ 350	1 × φ 350	1 × φ 400	1 × φ 450	1 × φ 450	2 × φ 450
	Input (W)	1 × 94W	1 × 94W	1 × 120W	1 × 160W	1 × 160W	2 × 160W
	Air Flow (m <sup>3</sup> /h)	2410	2410	3290	4500	4500	9000
Evaporating Tempe -5°C	Cooling Capacity (W)	2923	3703	6276	6077	7609	11789
	Input (KW)	1.48	1.62	2.64	2.67	3.73	4.77
Evaporating Tempe -10°C	Cooling Capacity (W)	2425	3072	5206	5041	6270	9713
	Input (KW)	1.43	1.56	2.54	2.58	3.61	4.62
Evaporating Tempe -15°C	Cooling Capacity (W)	1990	2522	4272	4137	5111	7918
	Input (KW)	1.37	1.5	2.44	2.48	3.49	4.46
Evaporating Tempe -25°C	Cooling Capacity (W)	1291	1635	2771	2683	3292	5101
	Input (KW)	1.26	1.38	2.24	2.27	3.24	4.15
Evaporating Tempe -35°C	Cooling Capacity (W)	787	997	1400	1636	2070	3206
	Input (KW)	1.16	1.27	2.1	2.09	3.01	3.85
Evaporating Tempe -40°C	Cooling Capacity (W)	596	755	1280	1240	1655	2565
	Input (KW)	1.12	1.22	1.99	1.65	2.91	3.72
Pipe	Suction Inlet (mm)	5/8 "	5/8 "	5/8 "	5/8 "	5/8 "	3/4 "
	Liquid Dia (mm)	3/8 "	3/8 "	3/8 "	3/8 "	3/8 "	1/2 "
Overall Dimension L×W×H (mm)	825×360×660	825×360×660	975×360×810	1300×560×690	1300×560×990	975×360×1310	1175×360×1260

Test condition: Subcooling temp. 8.3K Return gas superheat temp. 25K Condensing Temp. +50°C

## DC Inverter Compressor Unit

Model	MBH03Z	MBH04Z	MBH05Z	MBH06Z	MBH07Z	MBH08Z	MBH10Z	MBH12Z
Max Cooling Capacity	Evap -7°C (KW)	5.89	7.23	8.37	10.27	11.99	16.6	17.7
	Frequency (Hz)	70	85	70	85	85	85	85
Pipe	Suction Inlet (mm)	5/8 "	5/8 "	3/4"	3/4"	3/4"	7/8"	7/8"
	Liquid Dia (mm)	3/8 "	3/8 "	1/2"	1/2"	1/2"	5/8"	5/8"
Frequency Range (Hz)	15-70	15-85	15-70	15-85	15-85	30-85	30-85	30-85
Evaporating Temp Range (°C)	-15°C ~ +10°C							
Power supply (V)	220	220	220	220	220	380	380	380
Overall Dimension L×W×H (mm)	1115x473x868	1115x473x868	1115x473x1409	1115x473x1409	1115x473x1409	1115x473x1574	1115x473x1574	1115x473x1574
Model	LBH03Z	LBH04Z	LBH05Z	LBH06Z	LBH07Z	LBH08Z	LBH10Z	LBH12Z
Max Cooling Capacity	Evap -23°C (KW)	3.03	3.71	4.3	5.27	6.16	9.1	9.7
	Frequency (Hz)	70	85	70	85	85	85	85
Pipe	Suction Inlet (mm)	5/8 "	5/8 "	3/4"	3/4"	3/4"	7/8"	7/8"
	Liquid Dia (mm)	3/8 "	3/8 "	1/2"	1/2"	1/2"	5/8"	5/8"
Frequency Range (Hz)	15-70	15-85	15-70	15-85	15-85	30-85	30-85	30-85
Evaporating Temp Range (°C)	-30°C ~ -15°C							
Power supply (V)	220	220	220	220	220	380	380	380
Overall Dimension L×W×H (mm)	1115x473x868	1115x473x868	1115x473x1409	1115x473x1409	1115x473x1409	1115x473x1574	1115x473x1574	1115x473x1574